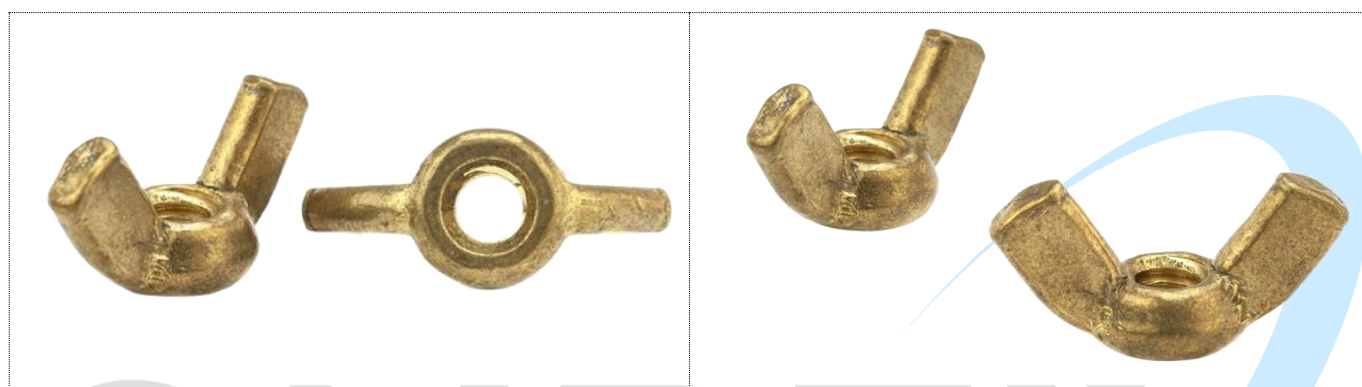


DIN 315 LATÃO

PORCA BORBOLETA

Polido

- **Material:** Latão
- **Acabamento:** Polido



Diâmetro	Rosca/Passo	M (Alt. Do corpo) REF.	E (Largura) REF.	H (Altura total) REF.
3/16	BSW-24	4,31	22,86	11,68
1/4	UNC-20	5,33	27,43	14,22
5/16	UNC-18	6,09	31,49	16,51
3/8	UNC-16	7,11	36,06	20,06
1/2	UNC-13	9,39	48,26	25,40
1/2	BSW-12	9,39	48,26	25,40